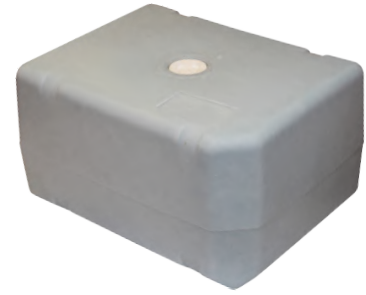


Waste Water Tanks

We sell fuel tanks, fresh water tanks and waste tanks. In this article we are going to focus on the waste tank (also known as the black water or holding tank).



Tips on installation

- Always mount the waste tank as close to the toilet as possible
- If on or below the water line, also use a vented loop (anti-syphon devices)
- Position the deck pump out so the hose is as straight as possible - this ensures that blockages can be rodded out
- Use good quality hose, especially in sections where waste could sit. It's always a good idea to double hose clips and to have the fastening screws on opposite sides
- Ensure the tank has adequate ventilation to allow pump out

Useful products to consider when installing a waste tank

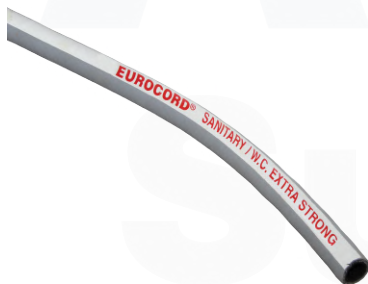
Hose: we recommend butyl rubber lined sanitation hose. It might cost more, but your nose will thank you for it.

Waste level sender and gauge: these will show you the level in the tank. SIC senders also feature a high level and a low level warning activation point.

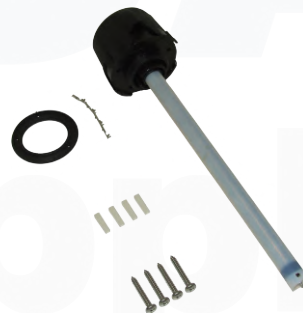
Vetus no smell filter: fits into the ventilation hose and prevents unpleasant smells coming out of the waste vent.

Waste pump: many installations use a macerator pump, but a full bore electric diaphragm pump usually offers better suction and most are also designed to run for longer periods of time.

Vetus vacuum valve: fits through the top of the tank and opens to allow air in when being pumped out, helping prevent the tank imploding.



Hose



Waste Level Sender



Waste Gauge



No Smell Filter



Waste Pump



Vacuum Valve