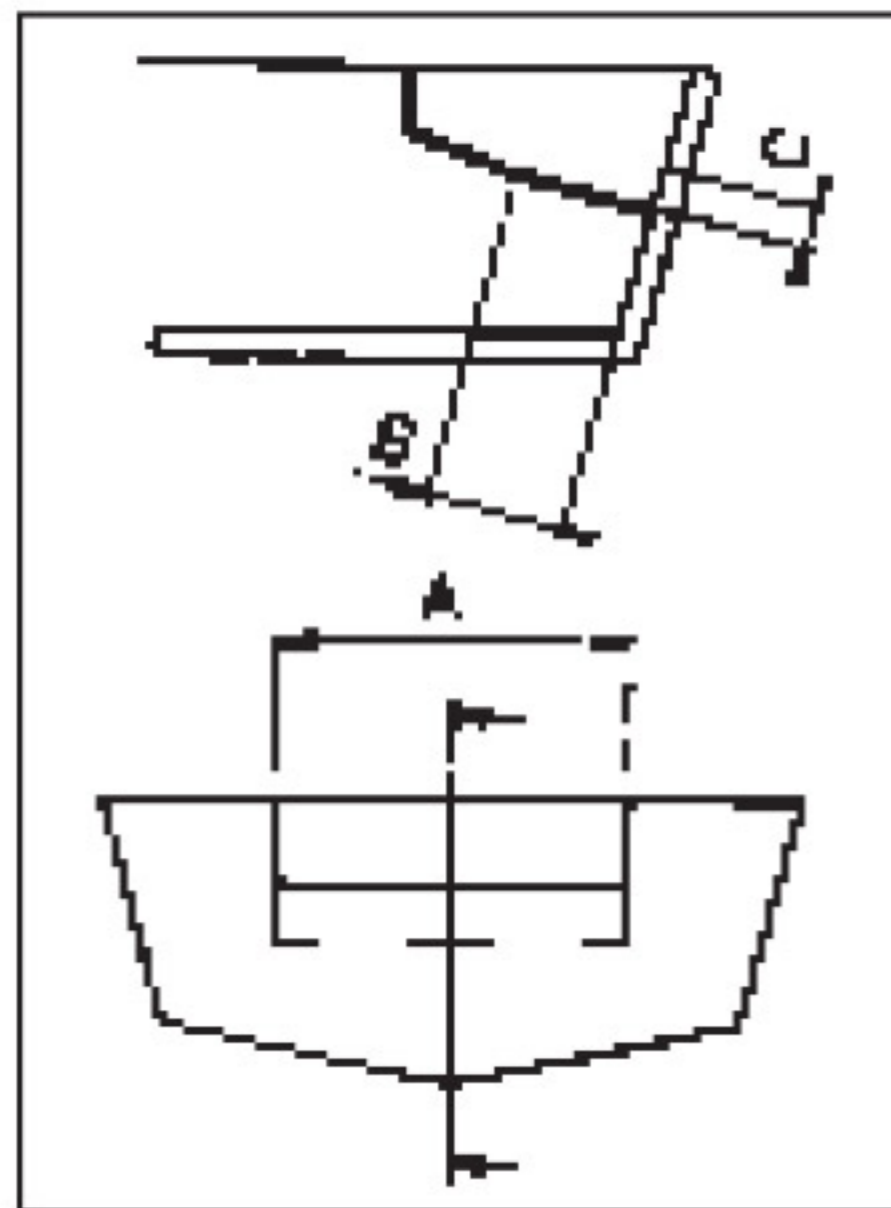


SPECIFICATIONS	UC95-OBF/1 -/3
Volume	94 cc - 5.7 cu. in
Output force	278 kg - 613 lbs
Internal diameter	30 mm - 1.18"
Stroke	186 mm - 7.3"
3/8" (9.5mm) Fittings	For high pressure flex hose
Bleed fittings	DN5 Quick connect



SPLASHWELL DIMENSION REQUIREMENTS			
Engine No.	A	B	C
1	540 mm - 21.25"	152 mm - 5.98"	152 mm - 5.98"