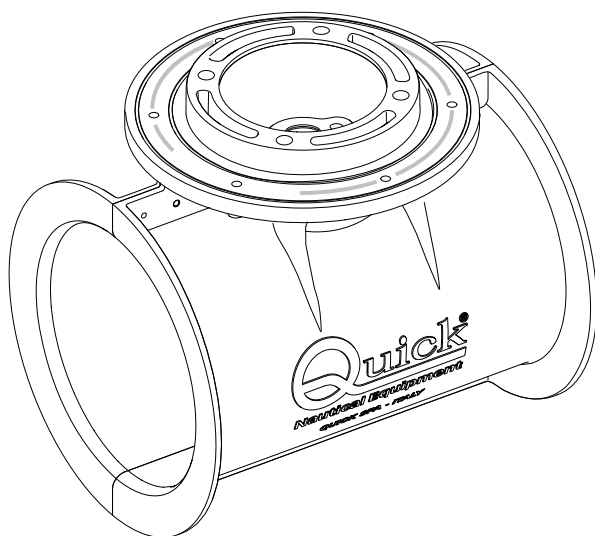


## **TUNNEL DI POPPA** **STERN TUNNEL**

140 • 185 • 250 • 300 • 386 • 513



MANUALE DI INSTALLAZIONE ED USO  
INSTALLATION AND USE MANUAL

IT - Pag. 3  
EN - Pag. 11

## **TUNNEL DI POPPA • STERN TUNNELS**

---

### **MODELLI DISPONIBILI • AVAILABLE MODELS**

---

140  
185  
250  
300  
386  
513

<b>1 - Information about the product</b>	Pag. 12
1.0 - Technical data	Pag. 12
1.1 - General information	Pag. 13
<b>2 - Supplied parts</b>	Pag. 13
2.0 - Package contents	Pag. 13
2.1 - Quick® recommended accessories	Pag. 13
2.2 - Needed tools for installation	Pag. 13
<b>3 - Safety</b>	Pag. 14
3.0 - Important notes	Pag. 14
3.1 - Precautions	Pag. 14
3.2 - Precautions for the installer	Pag. 14
<b>4 - Installation</b>	Pag. 15
4.0 - Installation requirements	Pag. 15
4.1 - Installation procedures	Pag. 15
4.2 - Installation tunnel	Pag. 16
4.3 - Motor Installation on the stern tunnel	Pag. 17
<b>5 - Warnings</b>	Pag. 17
5.0 - Important warnings	Pag. 17
<b>Accessories</b>	Pag. 18

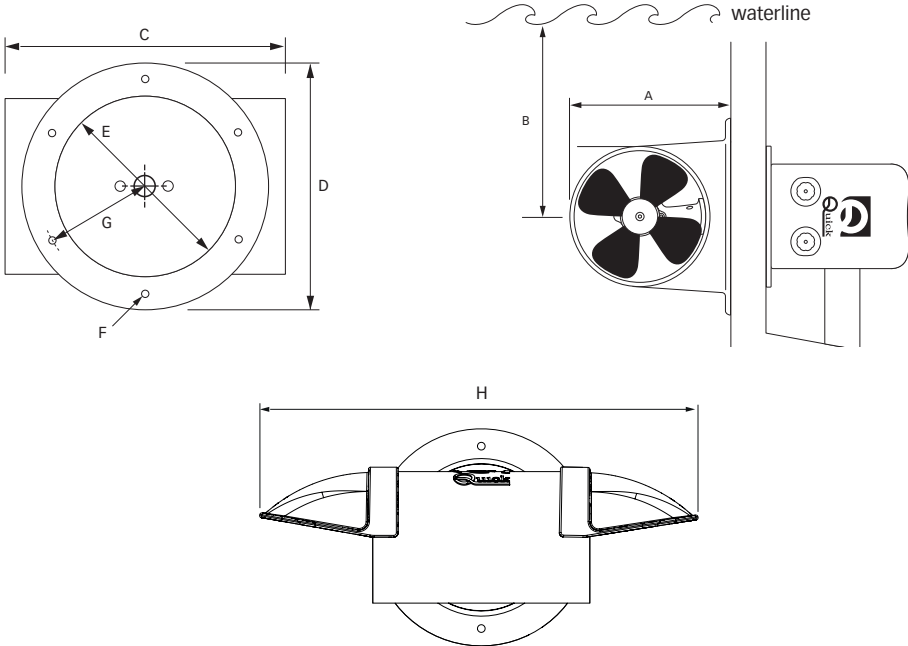


# 1 - Information about the product

QUICK® RESERVES THE RIGHT TO INTRODUCE CHANGES TO THE EQUIPMENT AND THE CONTENTS OF THIS MANUAL WITHOUT PRIOR NOTICE.  
IN CASE OF DISCORDANCE OR ERRORS IN TRANSLATION BETWEEN THE TRANSLATED VERSION AND THE ORIGINAL TEXT IN THE ITALIAN LANGUAGE,  
REFERENCE WILL BE MADE TO THE ITALIAN TEXT.

## 1.0 - Technical data

Fig.1 DIMENSIONS



Models	BT 140		BT 185		BT 250	
Materials	BMC		BMC		BMC	
Propulsion system	Single propeller		Single propeller		Double propeller	
Units of measure	mm	inch	mm	inch	mm	inch
<b>Ø Tunnel</b>	<b>140</b>	<b>5" 1/2</b>	<b>185</b>	<b>7" 9/32</b>	<b>250</b>	<b>9" 27/32</b>
<b>A</b>	176	6" 59/64	262	10" 5/16	360	14" 11/64
<b>B*</b>	175	6" 57/64	232	9" 9/64	313	12" 21/64
<b>C</b>	250	9" 27/32	337	13" 17/64	420	16" 17/32
<b>D</b>	250	9" 27/32	300	11" 13/16	380	14" 61/64
<b>E</b>	160	6" 19/64	205	8" 5/64	255	10" 3/64
<b>F</b>	9	23/64	11	7/16	11	7/16
<b>G</b>	105	4" 9/64	128	5" 3/64	160	6" 19/64
<b>H**</b>	510	20" 5/64	683	26" 57/64	886	34" 7/8
<b>CODE</b>	FGTLPV140000A00		FGTLPB185000A00		FGTLPB250000A00	

\* Recommended value  
\*\*Optional cowls

Models	300		386		513	
Materials	BMC		GRP		GRP	
Propulsion system	Double propeller		Double propeller		Double propeller	
Units of measure	mm	inch	mm	inch	mm	inch
<b>Ø Tunnel</b>	<b>300</b>	<b>11" 13/16</b>	<b>386</b>	<b>15" 13/64</b>	<b>513</b>	<b>20" 13/64</b>
<b>A</b>	380	14" 61/64	485	19" 3/32	660	25" 63/64
<b>B*</b>	375	14" 49/64	483	19" 1/64	641	25" 15/64
<b>C</b>	490	19" 19/64	600	23" 5/8	1000	39" 3/8
<b>D</b>	380	14" 61/64	550	21" 21/32	660	25" 63/64
<b>E</b>	255	10" 3/64	386	15" 13/64	513	20" 13/64
<b>F</b>	11	7/16	13	33/64	18	45/64
<b>G</b>	160	6" 19/64	240	9" 29/64	340	13" 25/64
<b>H**</b>	1049	40" 15/32	1302	51" 17/64	---	---
<b>CODE</b>	FGTLPB300000A00		FGTLPV386000C00		FGTLPV513000A00	

\* Recommended value

\*\*Optional cowls

## 1.1 - General information

This manual refers only to the installation of the stern tunnel, which differs from the thruster installation instructions.

For thruster installation and use refer to its manual.



## 2 - Supplied parts

### 2.0 - Package contents

- Tunnel
- Drilling template
- User manual
- Conditions of warranty.

### 2.1 - Recommended accessories Quick®

- Cowls (Tunnel Ø 140, 185 ,250, 300, 386)


### 2.2 - Needed tools for installation


- Drill & drill
- Sealant (Sikaflex or similar)
- Hexagonal male key
- Fork key

**BEFORE USING THE TUNNEL, READ THIS INSTRUCTION MANUAL CAREFULLY. IF IN DOUBT, CONTACT YOUR NEAREST QUICK® DEALER.**

## 3.0 Important notes

This manual contains Warning and/or Caution symbols that are important for safety. Comply with the recommendations provided herein.

 **Warning** symbol concerning hazardous situations.

 **Caution** symbol to avoid direct or indirect damage to the product.

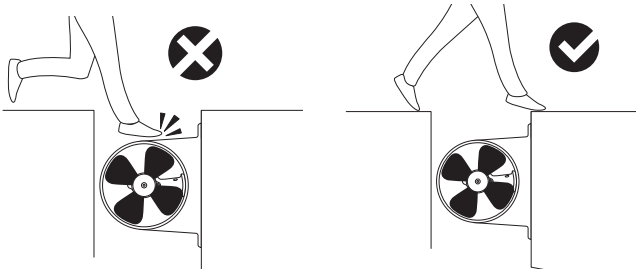
This document contains the instructions that are necessary for boat manufacturers and marine equipment installers to assemble and commission the **Stern Tunnel**.

## 3.1 Precautions



**The Quick® stern tunnel was designed and built only for the propeller.**

- Do not use these products for other uses.
- Do not use the stern tunnel as a support or passageway to get on/off the boat.



- This device must not be used and installed by people (including children) with reduced physical, sensory or mental capabilities. QUICK® SpA will not accept liability for direct or indirect damage caused by improper use of the equipment.
- We recommend you entrust preparation and positioning of the tube on the hull to a skilled professional. These are generic instructions and do not give details of the preparatory operations for installing the tunnel, since this is the competence of the boatyard. The installer shall bear full responsibility for any problems caused by defective installation of the tunnel. In case of problems caused by a defective installation, the installer will be held responsible.

## 3.2 Precautions for the installer



**PROCEEDING WITH THE INSTALLATION IN GOOD LIGHT CONDITIONS.**

We recommend using an appropriate personal protective equipment.

Assembly and subsequent inspections or repair operations must be exclusively performed by qualified personnel.

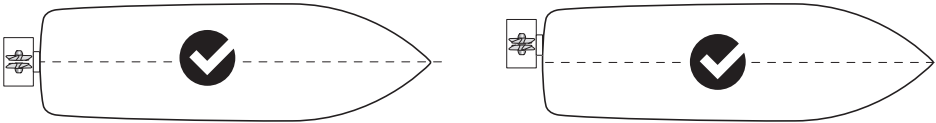
## 4.0 - Installation requisites



**THE ELECTRIC MOTOR MUST ALWAYS BE AWAY FROM THE WATER LEVEL**

- Make sure the stern tunnel does not interfere with the water flow under the hull.
- Make sure that, when installed, the thruster does not hinder the operation of existing equipment inside the boat.
- The motor must be supported in a manner that does not place the full weight on the tunnel.
- Make sure that the water flow from the thruster does not intercept the sterndrive engine, the flaps, etc., as any interference would considerably reduce the thrust.
- If necessary, it is possible to install the tunnel in a decentralized location (Fig. 2)

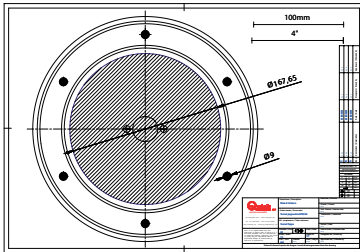
fig.2



## 4.1 Installation procedures

Take the tunnel template and place it outside the boat to mark holes.

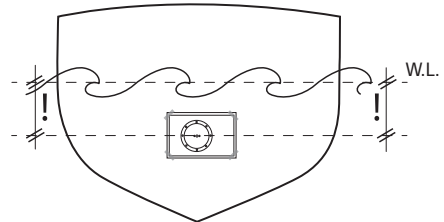
Drill template



Mark the center of the tunnel. (see Table on page 4/5). **For optimal results, install the tunnel below the waterline, keeping in mind the Table values (see table on page 4/5)**



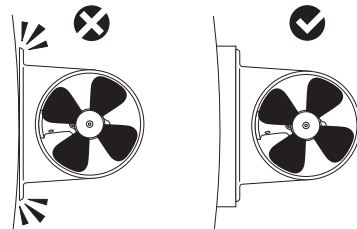
Align the tunnel to the waterline



Drill holes considering the boat construction materials, finish them and remove any residues.



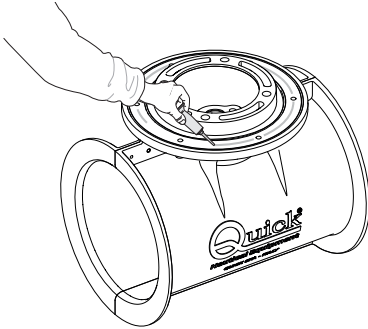
Check that the surfaces are as parallel as possible; otherwise, adjust to compensate the difference, as appropriate. If the surfaces are not parallel, the tunnel may be unstable and the thruster may malfunction.



## 4.2 Installation tunnel

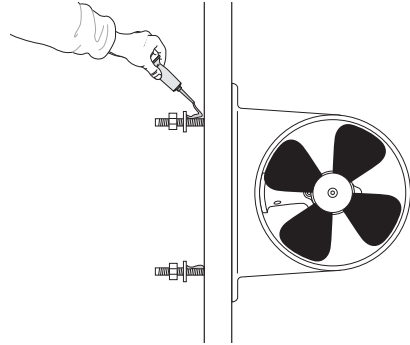
When installing the tunnel, apply Sikaflex sealant (or similar) to the surface to be fixed to the boat. (Fig. 3) .

fig.3



Apply the sealant in the flange and around the fixing bolts (Fig. 4).

fig.4

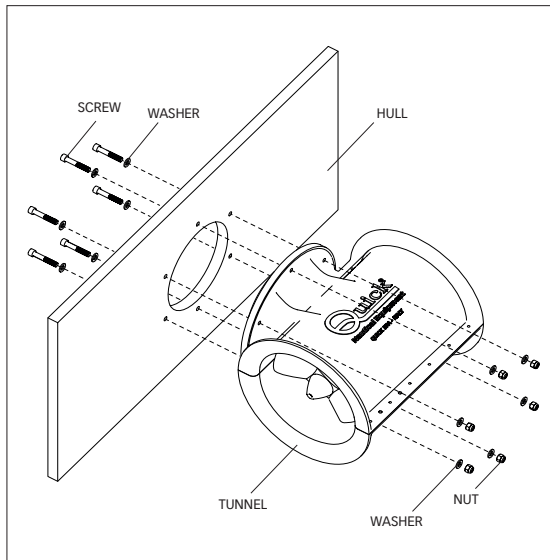


### TUNNEL INSTALLATION ON HULL

Tighten screws and nuts following a cross pattern, referring to the tightening values provided in the table. Periodically check the proper fixing of the screws.

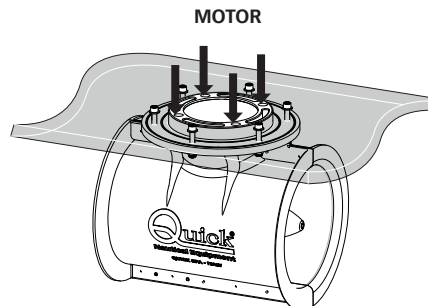
We recommend using A4 steel bolts and oversize washers both outside and inside.

Bolts, washers and nuts are not included, as they vary depending on the thickness of the transom.



TIGHTENING TORQUE	Nm
M6	11
M8	28
M10	56
M12	96
M14	152
M16	237

indicative values, evaluate the tightening considering the material of the surfaces to be fixed.



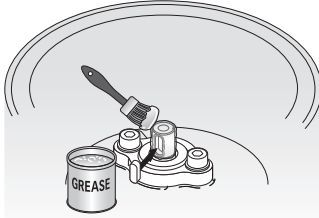




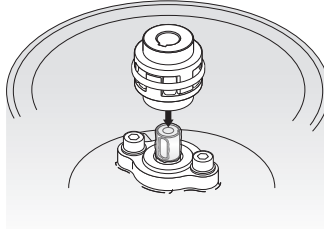
## 4 - Installation

### 4.3 Motor installation on the stern tunnel

A



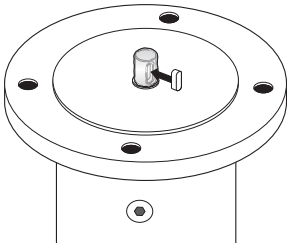
B



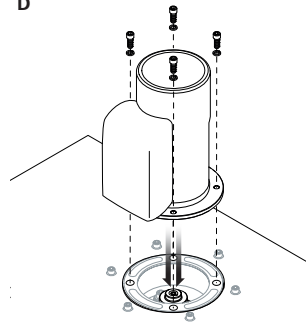
**A** Grease the terminal part of the gearleg shaft; fit the small key into its seat.

**B** Insert the elastic joint in the terminal part of the gearleg shaft.

C



D



**C** Grease the terminal part of the gearleg shaft; fit the small key into its seat.

**D** Insert the motor onto the elastic joint; fasten it with the 4 screws and washers provided.



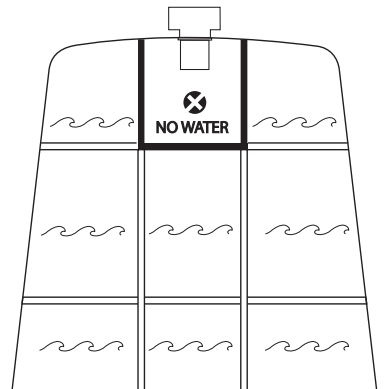
## 5 - Warnings

### 5.0 Important warnings

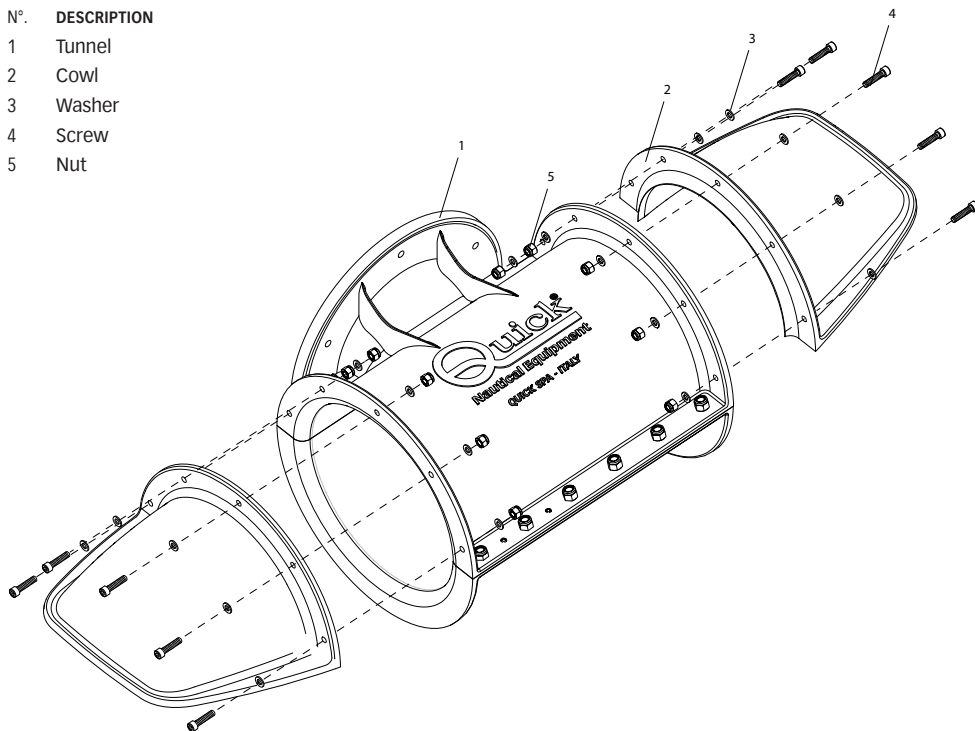


The motor unit is not waterproof; therefore, installation compartment and motor **must ALWAYS be kept dry**. All drainage holes and/or possible water inlets must be sealed.

We recommend installing a bilge pump, preferably with an alarm system, in the stern propeller compartment.



N°	DESCRIPTION
1	Tunnel
2	Cowl
3	Washer
4	Screw
5	Nut



### Recommended accessories Quick® Not supplied with the tunnel

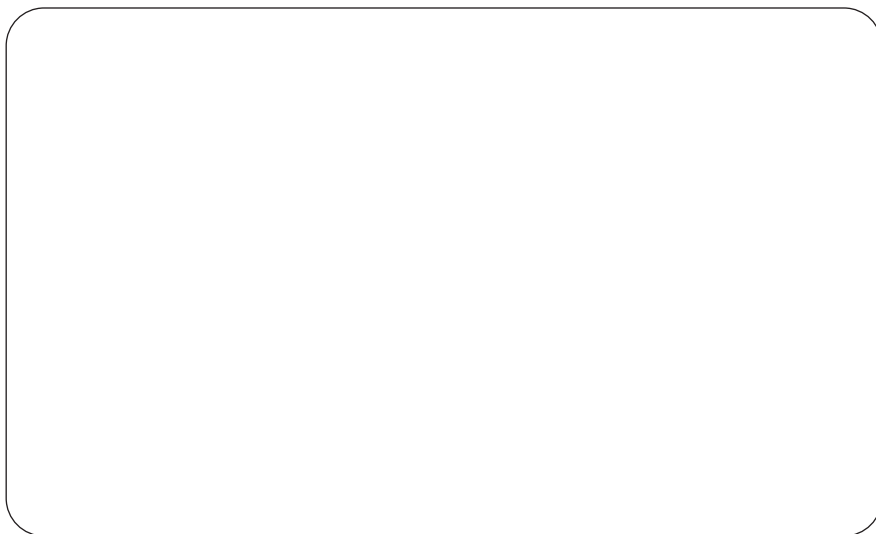
Code	Description	Material	Parts Numbers
FGDFTL140000A00	COWLS STERN TUNNEL Ø 140	BMC	2 - 3 - 4 - 5
FGDFTL185000A00	COWLS STERN TUNNEL Ø 185	BMC	2 - 3 - 4 - 5
FGDFTL250000A00	COWLS STERN TUNNEL Ø 250	BMC	2 - 3 - 4 - 5
FGDFTL300BMCA00	COWLS STERN TUNNEL Ø 300	BMC	2 - 3 - 4 - 5
FGDFTL360000A00	COWLS STERN TUNNEL Ø 386	GRP	2 - 3 - 4 - 5



REV 004A



MANUALE D'INSTALLAZIONE ED USO  
INSTALLATION AND USE MANUAL



Codice di serie del prodotto / Product code and serial number



QUICK® S.p.A. - Via Piangipane, 120/A - 48124 Piangipane (RAVENNA) - ITALY  
Tel. +39.0544.415061 - Fax +39.0544.415047 - [www.quickitaly.com](http://www.quickitaly.com) - [quick@quickitaly.com](mailto:quick@quickitaly.com)