

**Life Link Set Lifebuoys with rope**



**72077**

Set Lifebuoy Ring SOLAS 75cm, Lifeb.  
Light 71325, 30m rope, case grey



**72078**

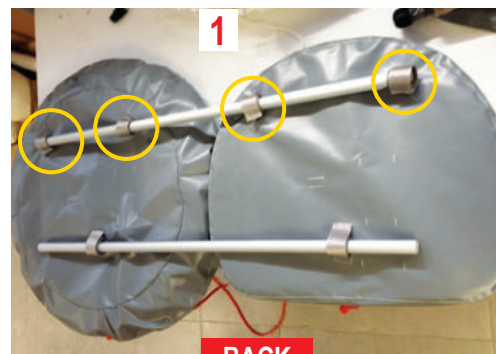
Set Horseshoe Lifebuoy 'Quick RD' orange,  
Lifeb. Light 71325, 30m rope, case grey



**FRONT**

72077

72078



**BACK**

72077

72078

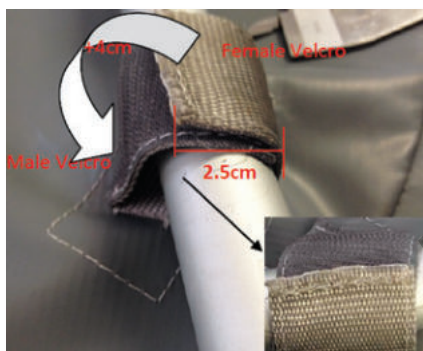


**INSIDE**



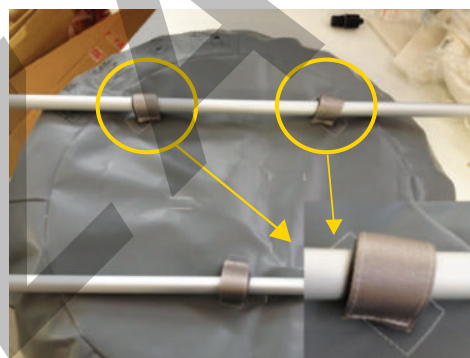
Designed and constructed inclined Velcro stitching to prevent case from tearing apart when opening it, as well as improving Velcro bonding strength.

**Before**



1. Only 2,5cm (length) female Velcro used for bonding.

**Now**



Longer Velcro patches, which will roll all around the rail for greater bonding strength.



2. Male Velcro was shorter than female Velcro.



Equally long male and female velcro patches to maximise retaining strength of the 30m floating rope.



3. Open/Close case stitches on the Velcros.



Finishing of stitching, that "covers" perimetrically the Velcro patches area to prevent case and patches from getting torn.