

B&G

Vulcan Series Getting Started

ENGLISH



Contents

6 Introduction

- 6 The Home page
- 7 Application pages

9 Basic operation

- 9 System Controls dialog
- 9 Turning the system on and off
- 10 Selecting pages and panels
- 10 Adjusting panel size
- 11 Adding new favorite pages
- 11 Creating a Man Overboard waypoint

13 Charts

- 13 The Chart panel
- 14 Showing dual chart types
- 14 Panning the chart
- 14 Using the cursor on the panel
- 15 Positioning the vessel on the chart panel
- 16 Displaying information about chart items
- 17 Find objects on chart panels
- 17 3D charts

18 Waypoints, Routes, and Tracks

- 18 Waypoints
- 19 Routes
- 20 Tracks

21 Navigating

- 21 Navigate to cursor position
- 21 Navigate a route
- 21 Navigating with the autopilot

22 SailSteer panel

- 23 Selecting data fields for the SailSteer panel
- 23 Sail Time calculations

24 Race panel

- 24 Display options
- 24 Start Line on Chart panel

25 Time and Wind plots

- 25 The Time plot panel
- 25 Wind Plot panel

26 Autopilot

- 26 Safe operation with the autopilot
- 26 Activating the autopilot
- 26 Switching from automatic mode to manual steering
- 27 Autopilot indication on the pages
- 28 The Autopilot panel

29 Radar

- 29 The radar panel
- 30 Radar menu options
- 30 Adjust the radar image
- 31 View and Advanced options
- 31 Radar settings

32 Echosounder

- 32 The Echosounder image
- 33 Viewing Echosounder history
- 33 Setting up the image

34 StructureScan

- 34 The StructureScan image
- 35 Setting up the image

36 ForwardScan

- 36 The ForwardScan image
- 37 Setting up the image
- 37 Heading extension

39 Instrument panels

- 39 Dashboards

40	Wireless connection
40	Connect and disconnect from a wireless hotspot
41	Audio
41	Enabling audio
42	The Audio panel
42	Operating the audio system
43	Alarms
43	Alarm system
43	Alarms dialog
44	Tools
44	Waypoints/routes/tracks
44	Tides
44	Alarms
44	Settings
44	Vessels
45	Sun, Moon
45	Trip calculator
45	Files
45	Find
45	GoFree Shop

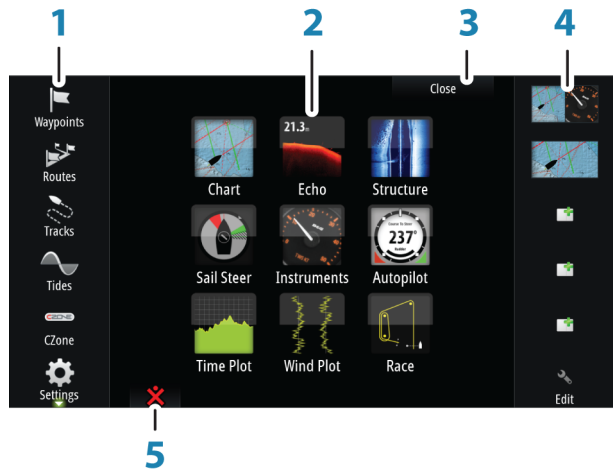
1

Introduction

This manual provides an overview of the product and its features. For more detailed information about the features, functions and options, refer to the Operator manual. You can access the Operator manual from the Files option in the Tools panel, refer to "Files" on page 45.

The Home page

The **Home** page is accessed from any operation by selecting the **Home** button in the left corner of a panel.



1 Tools

Select a button to access dialogs used for carrying out a task, or for browsing stored information.

2 Applications

Select a button to display the application as a full page panel. Press and hold a button to display pre-configured split page options for the application.

3 Close button

Select to exit the Home page and return to the previous active page.

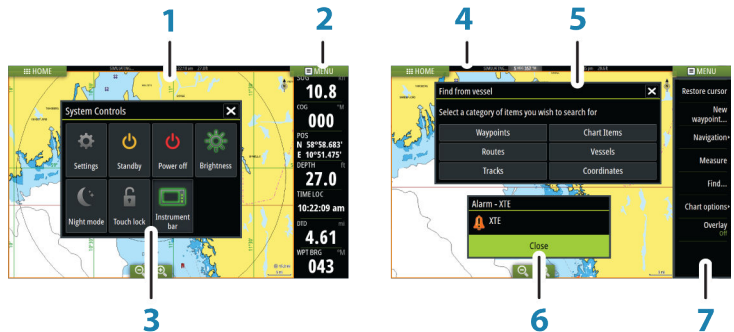
4 Favorites

Select a button to display the panel combination.
Press and hold a favorite button to enter edit mode for the Favorites panel.

5 Man Over Board (MOB) button

Select to save a Man Over Board (MOB) waypoint at the current vessel position.

Application pages



Each application connected to the system is presented on panels. The application can be presented as a full page, or in combination with other panels in a multiple panel page.

All application pages are accessed from the **Home** page.

1 Application panel

2 Instrument bar

Navigation and sensor information. The bar can be turned off and it can be configured by the user.

3 System controls dialog

Quick access to basic system settings.

Display the dialog by a short press on the **Power** key or by swiping down from top of the screen.

4 Status bar

5 Dialog

Information to or input from the user.

6 Alarm message

Displayed if dangerous situations or system faults occur.

7 Menu

Panel specific menu.

Pre-configured split pages

Each full screen application has several pre-configured split pages, featuring the selected application combined with each of the other panels.

→ **Note:** The number of pre-configured split pages cannot be changed, and the pages cannot be customized or deleted.

Access a pre-configured split page by pressing and holding the main panel button.



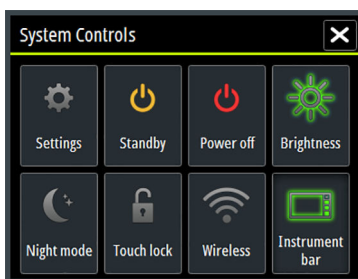
2

Basic operation

System Controls dialog

The System Controls dialog provides quick access to basic system settings. You display the dialog by making a short press on the **Power** key or by swiping down from the top of the screen.

The icons displayed on the dialog can vary. For example, the adjust splits option is only available if you are viewing a split page when you open the **System Controls** dialog.



Activating functions

Select the icon of the function you want to set or toggle on or off. For those functions that toggle on and off, a highlighted icon indicates the function is activated, as shown in the Instrument bar icon above.

Turning the system on and off

You turn the system on and off by pressing and holding the **Power** key. You can also turn the unit off from the **System Controls** dialog.

If the **Power** key is released before the shut-down is completed, the power off process is cancelled.



Selecting pages and panels

Selecting a page

- Select a full page panel by selecting the relevant application button on the **Home** page
- Select a favorite page by selecting the relevant favorite button
- Select a predefined split panel by pressing and holding the relevant application icon

Select active panel

In a multiple panel page, only one panel can be active at a time. The active panel is outlined with a border.

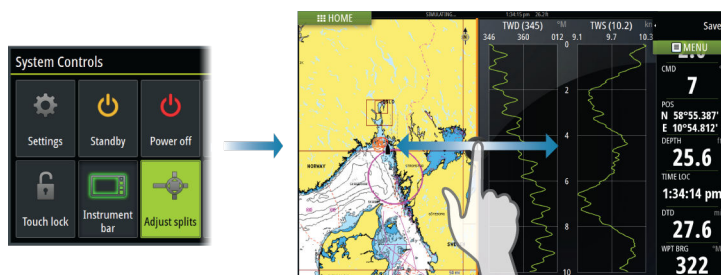
You can only access the page menu of an active panel.

You activate a panel by tapping it.

Adjusting panel size

You can change the panel size for an active split page. The panel size can be adjusted for both favorite pages and for predefined split pages.

1. Activate the **System Controls** dialog
2. Select the adjust splits option in the dialog
3. Adjust the panel size by dragging the adjustment icon
4. Confirm your changes by tapping one of the panels or selecting the save option in the menu.



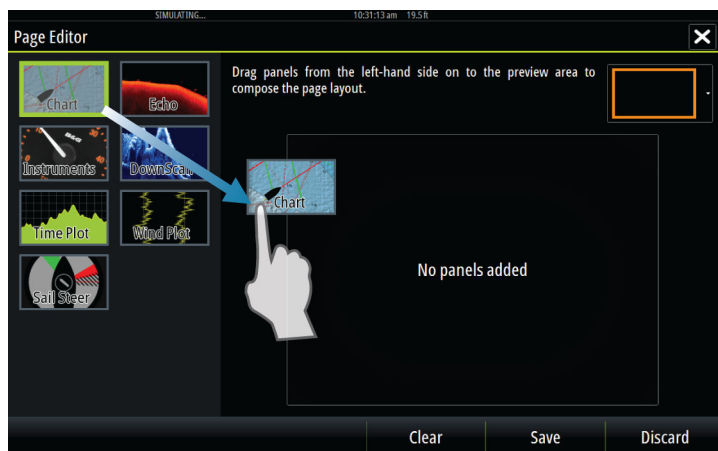
The changes are saved to the active favorite or split page.

Adding new favorite pages



1. Select the **New** icon in the favorite panel on the **Home** page to open the page editor dialog
2. Drag and drop page icons to set up a new page
- **Note:** 5" unit favorite pages can have a maximum of 2 applications.
3. Change the panel arrangement (only possible for 2 or 3 panels), if required
4. Save the page layout.

The system displays the new favorite page, and the new page is included in the list of favorite pages on the **Home** page.



Creating a Man Overboard waypoint

If an emergency situation should occur, you can create a Man Overboard (MOB) waypoint at the vessel's current position by selecting the **MOB** button on the **Home** page.

When you activate the MOB function the following actions are automatically performed:

- a MOB waypoint is created at the vessel's position
- the display switches to a zoomed chart panel, centered on the vessel's position

- the system displays navigation information back to the MOB waypoint

Multiple MOB waypoints are saved by repeatedly pressing the **MOB** buttons. The vessel continues to show navigation information to the initial MOB waypoint. Navigation to subsequent MOB waypoints needs to be done manually.

Delete a MOB waypoint

1. Select the MOB waypoint to activate it
2. Select the MOB waypoint's pop-up to display the MOB waypoint dialog
3. Select the delete option in the dialog.

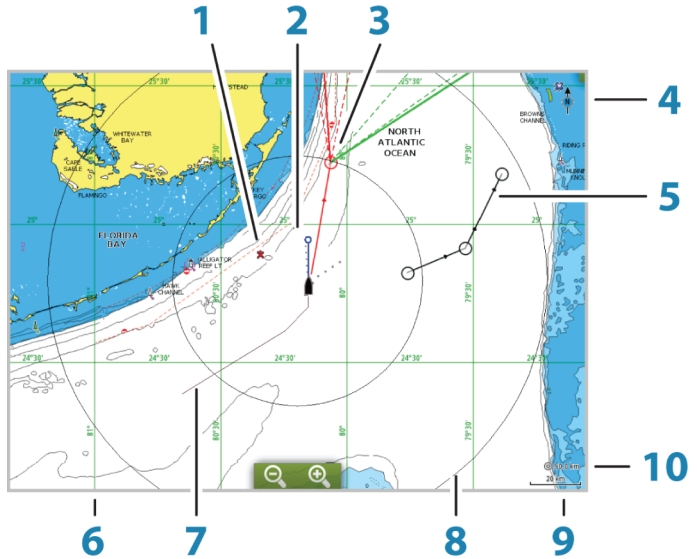
A MOB waypoint can also be deleted from the menu when it is activated.

3

Charts

The chart function displays your vessel's position relative to land and other chart objects. On the chart panel you can plan and navigate routes, place waypoints, and display AIS targets.

The Chart panel



- 1 MOB (Man Over Board) mark
- 2 Vessel with extension line (extension line is optional)
- 3 Waypoint with Laylines*
- 4 North indicator
- 5 Route*
- 6 Grid lines*
- 7 Track*
- 8 Range rings*
- 9 Chart range scale
- 10 Range rings interval (only displayed when Range rings are turned on)

* Optional chart items. You turn the optional chart items on/off individually from the Chart settings dialog.

Showing dual chart types

If you have different chart types available - embedded or in the card slot - you can show two different chart types simultaneously on a page with two chart panels.

You can select a dual chart panel by pressing and holding the Chart application button on the **Home** page, or by creating a favorite page with two chart panels.

Panning the chart

You can move the chart in any direction by dragging your finger on the screen.

Select the **Clear cursor** menu option to remove the cursor and cursor window from the panel. This also centers the chart to the vessel position.

Using the cursor on the panel

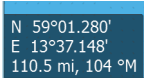
The cursor can be used to measure a distance, to mark a position, and to select items.

By default, the cursor is not shown on the panel.

Position the cursor by tapping the desired location on the screen.

When the cursor is active, the cursor position window is displayed.

To remove the cursor and cursor elements from the panel, select the **Clear cursor** option.



N 59°01.280'
E 13°37.148'
110.5 mi, 104 °M

GoTo cursor

You can navigate to a selected position on the image by positioning the cursor on the panel, then using the **Goto Cursor** option in the menu.

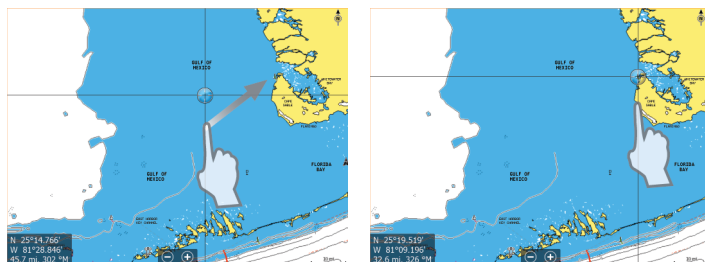
The Cursor assist function

The cursor assist function allows for fine tuning and precision placement of the cursor without covering details with your finger.

Press and hold your finger on the screen to switch the cursor symbol to a selection circle, appearing above your finger.

Without removing your finger from the screen, drag the selection circle over the desired item to display item information.

When you remove your finger from the screen the cursor reverts to normal cursor operation.



Measuring distance

The cursor can be used to measure the distance between your vessel and a selected position, or between 2 points on the chart panel.

1. Position the cursor on the point from where you want to measure the distance. Start the measure function from the menu
 - The measuring icons appear with a line drawn from the vessel center to the cursor position, and the distance is listed in the cursor information window.
 2. You can reposition the measuring points by dragging either icon as long as the measuring function is active
- **Note:** The bearing is always measured from the grey icon to the blue icon.

You can also start the measuring function without an active cursor. Both measuring icons are then initially located at the vessel position. The grey icon follows the vessel as the vessel moves, while the blue icon remains at the position given when you activated the function.

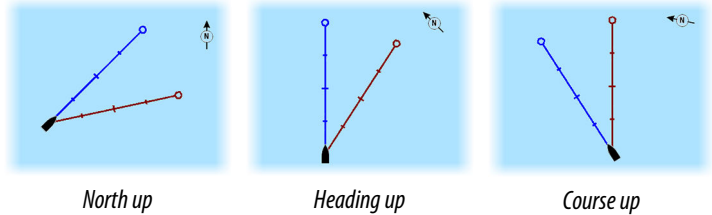
You terminate the measuring function by selecting the **Finish measuring** menu option.

Positioning the vessel on the chart panel



Chart orientation

Several options are available for how the chart is rotated in the panel. The chart orientation symbol in the panel's upper right corner indicates the north direction.



North up

Displays the chart with north upward.

Heading up

Displays the chart with the vessel's heading directed upward. Heading information is received from a compass. If heading is not available, then the COG from the GPS is used.

Course up

Displays the chart with the direction the vessel is ACTUALLY traveling directed upward, which in some cases is not the direction the vessel is headed.

Look ahead

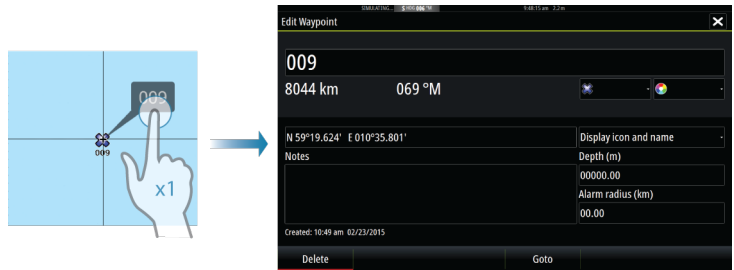
Moves the vessel icon closer to the bottom of the screen so that you can maximize your view ahead.

Displaying information about chart items

When you select a chart item, a waypoint, a route, or a target, basic information for the selected item is displayed. Select the chart item's pop-up to display all available information for that item. You can also activate the detailed information dialog from the menu.

→ **Note:** If you are viewing applicable C-MAP charts on your system, you can select marine objects to display information about services and available multimedia (photos) associated with the location or object.

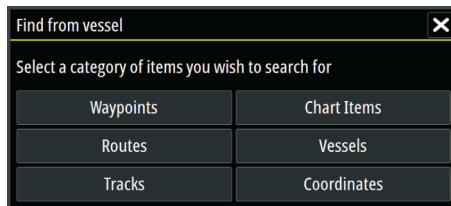
→ **Note:** Pop-up information has to be enabled in chart settings to see basic item information.



Find objects on chart panels

You can search for other vessels or various chart items from a chart panel.

Activate the cursor on the panel to search from the cursor position. If the cursor is not active, the system searches for items from the vessel's position.



→ **Note:** You must have a SIRIUS data package subscription to search for fueling stations and an AIS receiver connected to search for vessels. SIRIUS is not available on 5" and 7" units.

3D charts

The 3D option provides a three dimensional graphical view of land and sea contours.

→ **Note:** All chart types work in 3D mode, but without 3D cartography for the appropriate area the chart appears flat.

When 3D chart option is selected, the Pan and the Rotate icons appear on the right side of the chart panel.

4

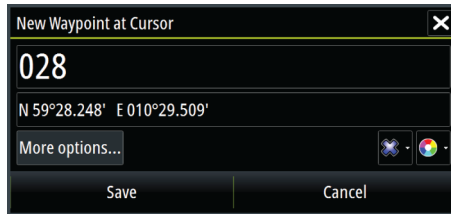
Waypoints, Routes, and Tracks

Waypoints

A waypoint is a user generated mark positioned on a chart, or on the Echosounder image. Each waypoint has an exact position with latitude and longitude coordinates. A waypoint positioned on the Echosounder image has a depth value, in addition to position information. A waypoint is used to mark a position you later may want to return to. Two or more waypoints can also be combined to create a route.

Saving waypoints

You can save a waypoint at a selected location by positioning the cursor on the panel, and then selecting the new waypoint option in the menu.



In the Chart and Nav panels, you can save a waypoint at the vessel position, when the cursor is not active, by selecting the new waypoint option in the menu.



Moving a waypoint

1. Select the waypoint you want to move. The waypoint icon expands to indicate that it is active.
2. Activate the menu and select the waypoint in the menu
3. Select the move option
4. Select the new waypoint position
5. Select Finish in the menu.

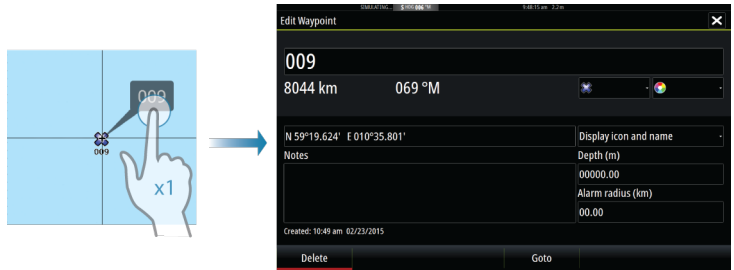
The waypoint is now automatically saved at the new position.

Edit a waypoint

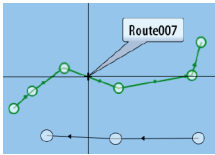
You can edit all information about a waypoint from the **Edit Waypoint** dialog.

This dialog is activated by selecting the waypoint's pop-up, or from the menu when the waypoint is activated.

The dialog can also be accessed from the Waypoints tool on the **Home** page.



Routes



A route consists of a series of routepoints entered in the order that you want to navigate them.

When you select a route on the chart panel it turns green, and the route name is displayed.

The system includes support for Navionics Autorouting and C-MAP Easy Routing. This feature automatically suggests routepoints between the first and last routepoint of a route, or between selected routepoints in a complex route. You can use the feature when you create a new route, or you can use it to edit already saved routes.

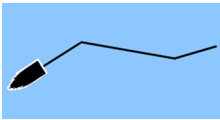
Creating a new route on the chart panel

1. Activate the cursor on the chart panel
2. Select the new route option from the menu
3. Position the first waypoint on the chart panel
4. Continue positioning new routepoints on the chart panel until the route is completed
5. Save the route by selecting the save option in the menu.

Edit a route from the chart panel

1. Select the route to make it active
 2. Select the route edit option in the menu
 3. Position the new routepoint on the chart panel:
 - If you set the new routepoint on a leg, a new point is added between existing routepoints
 - If you set the new routepoint outside the route, the new routepoint is added after the last point in the route
 4. Drag a routepoint to move it to a new position
 5. Save the route by selecting the save option in the menu.
- **Note:** The menu changes depending on the selected edit option. All edits are confirmed or cancelled from the menu.

Tracks



Tracks are a graphical presentation of the historical path of the vessel, allowing you to retrace where you have travelled. Tracks can be converted to routes from the **Edit** dialog.

From the factory, the system is set to automatically track and draw the vessel's movement on the chart panel. The system continues to record the Tracks until the length reaches the maximum points, and then automatically begins overwriting the oldest points.

The automatic tracking function can be turned off from the Tracks dialog.

Creating new Tracks

You can start a new track from the **Tracks** dialog, activated by using the **Tracks** tool on the Home page.

5

Navigating

The navigation function included in the system allows you to navigate to the cursor position, to a waypoint, or along a predefined route.

If autopilot functionality is included in your system, the autopilot can be set to automatically navigate the vessel.

For information about positioning waypoints and creating routes, refer to "*Waypoints, Routes, and Tracks*" on page 18.

Navigate to cursor position

You can start navigating to a cursor position on any chart, or Echosounder panel.

Position the cursor at the selected destination on the panel, and then select the **Goto Cursor** option in the menu.

→ **Note:** The **Goto Cursor** menu option is not available if you are already navigating.

Navigate a route

You can start navigating a route from the chart panel or from the **Route** dialog.

When route navigation is started, the menu expands and shows options for canceling the navigation, for skipping a waypoint, and for restarting the route from current vessel position.

Navigating with the autopilot

When you start navigation on a system with autopilot functionality, you are prompted to set the autopilot to navigation mode.

If you choose not to engage the autopilot, the autopilot can be set to navigation mode from the Autopilot Controller later on.

For more information about autopilot functionality, refer to "*Autopilot*" on page 26.

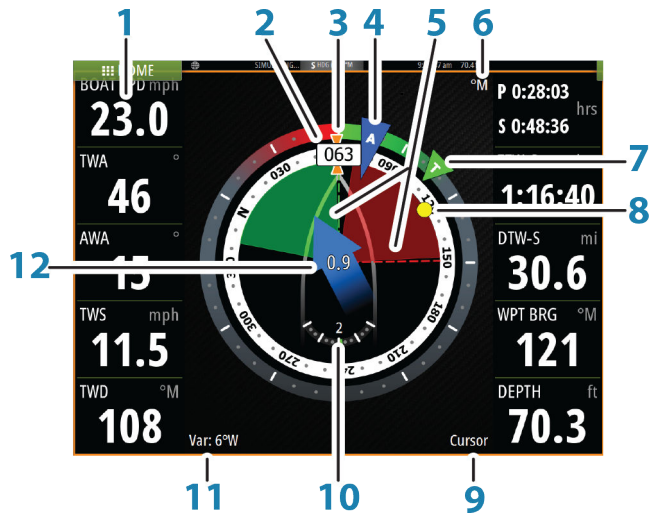
6

SailSteer panel

The SailSteer panel provides a composite view of key sailing data. All data is displayed relative to the yacht's bow, providing a clear and easy to understand image of important sailing data.

The SailSteer panel can be shown as a full screen panel, or in a multi-panel page.

The number of data fields included in the panel is dependent on available panel size.



- 1 User configurable data fields
- 2 Vessel heading
- 3 COG (Course Over Ground)
- 4 Apparent wind*
- 5 Port and starboard laylines.
- 6 Magnetic or True reference
- 7 TWA (True Wind Angle) - Green if on TWA upwind or downwind. Blue if off target by 10° or more, or on a free leg. The indicator will fade from blue to green the closer you get to the exact angle.*
- 8 Bearing to current waypoint

- 9 Active (next) waypoint ID, routepoint ID, or cursor
- 10 Rudder angle
- 11 Magnetic variation
- 12 Tide rate and relative direction*

* Optional images. You can turn the optional images on/off from the menu.

Selecting data fields for the SailSteer panel

Data sources connected to the system can be viewed on the SailSteer panel.

1. Select the SailSteer panel to make it active.
2. Select the **MENU** button and select the edit option.
 - Edit mode is indicated in top of the panel.
3. Select the instrument field you want to change.
 - The selected field has a highlighted frame.
4. Select the **MENU** button again to select info.
5. Repeat the steps to change other instrument fields.
6. Save your settings by selecting the save option in the menu.

Sail Time calculations

The system calculates the time and distance to a waypoint taking into consideration that the vessel is sailing on a layline course to the waypoint. Data showing time calculations will be indicated with an -S extension:

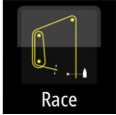
- DTW-S Sailing Distance to Waypoint
- TTW-S Sailing Time to Waypoint
- ETA-S Sailing Estimated Time of Arrival

7

Race panel

Use the Race panel to:

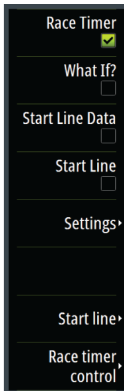
- Display and control the race timer
- Create and manage the race start line
- Display race start line data
- Display the race start line in a chart diagram on the Race panel



Select the Race button on the Home page to display the Race panel.

Display options

Use the Race panel menu to specify if you want to display the Race Timer, What if? data, Start Line Data, or Start Line display (display the boat and start line in graphical format).

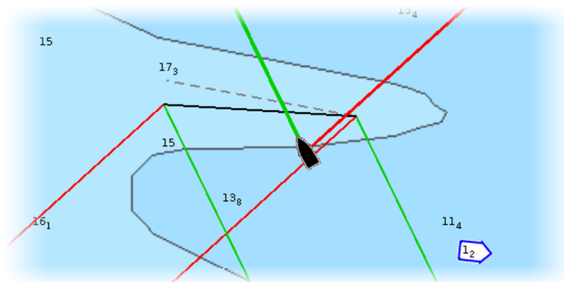


Start Line on Chart panel

You can display a race start line overlaid on the Chart panel. The start line data can be displayed in the Instrument page. If you have an H5000 CPU on your network, start line data is calculated by the H5000 CPU. Otherwise the data is calculated in the MFD.

Viewing the start line on the chart panel allows the navigator to assess around the starting area for hazards. Use the laylines to see where the likely tracks into and out of the starting area will be relative to the chart data.

The solid black line indicates the start line (between the two starting marks) on the chart panel. You can switch off the start line overlaid on the Chart if desired.



8

Time and Wind plots

The system can present data history in different plots. The plots can be displayed in full page, or combined with other panels.

The Time plot panel

The Time plot panel consists of two predefined layouts. You switch between the layouts by selecting the left and right panel arrows. You can also select the layout from the menu.

You can select which data to present on a time plot panel, and you can define the time range for each plot.

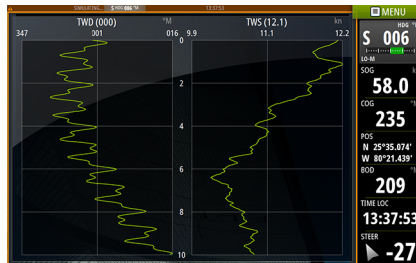


Layout 1

Layout 2

Wind Plot panel

A Wind Plot is a special type of Time Plot specifically designed to help you understand recent changes in wind speed and direction. The Wind Plot panel includes wind direction and wind speed. The graphics are configured vertically with the newest data being displayed at the top of the screen.



9

Autopilot

If a compatible autopilot computer is connected to the system, autopilot functionality is available in the system.

The system does not allow for more than one autopilot computer on the network.

The display unit automatically detects the autopilot computer available on the network and presents settings, configuration and user options for the connected computer.

For details about installing and configuring an autopilot computer, refer to the separate manuals that come with the autopilot computer.

Safe operation with the autopilot

⚠ Warning: An autopilot is a useful navigational aid, but DOES NOT replace a human navigator.

⚠ Warning: A physical standby key should be available for the autopilot.

Activating the autopilot

You activate the autopilot from any panel by selecting the autopilot tile in the Instrument bar, followed by selecting a mode in the **Autopilot Controller**.

Switching from automatic mode to manual steering

You switch the autopilot to STBY mode from any automatic operation mode from the autopilot pop-up or using a physical standby key.



Autopilot indication on the pages



- 1 Autopilot indication in Status bar
- 2 Autopilot pop-up
- 3 Autopilot tile in Instrument bar

Autopilot mode indication in the Status bar

S HDG 007 °M

The Status bar shows autopilot information as long as an autopilot computer is connected to the network.

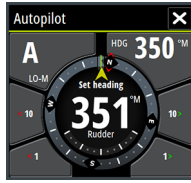
Icons are included if the autopilot is passive or locked by another autopilot control unit.

Autopilot pop up

You control the autopilot from the autopilot pop-up. The pop-up has a fixed position on the page, and it is available for all pages except when an Autopilot panel is active.

As long as the autopilot pop-up is active, you cannot operate the background panel or its menu. You remove the pop-up from a page by selecting the **X** in the upper right corner. You turn it on again by selecting the autopilot tile in the instrument bar.

The following pop-ups are available:



Autopilot controller



Mode selection



Turn pattern selection

Autopilot tile in Instrument bar

You can select to show the autopilot tile in the Instrument bar.

If the autopilot pop-up is turned off you can turn it on by selecting the tile in the Instrument bar.



The Autopilot panel

The autopilot panel is used to display navigation data. It can be shown as a full screen panel, or in a multi-panel page.

The number of data fields included in the autopilot panel is dependent on available panel size.



10

Radar

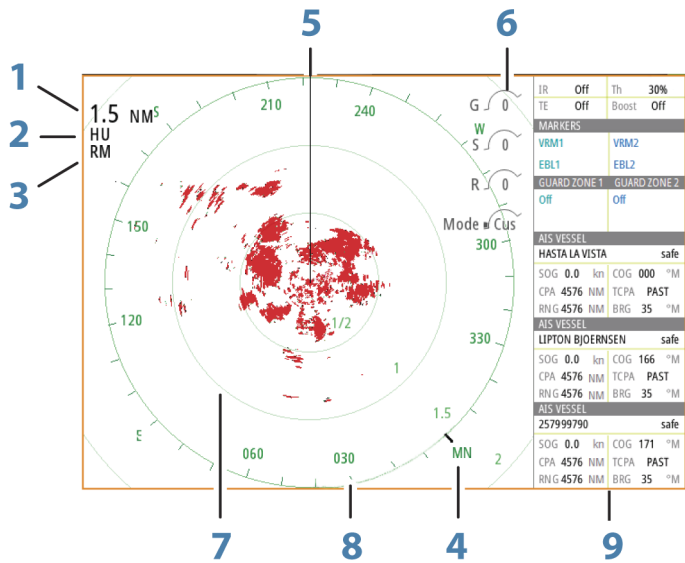
Radar is not available on the 5" and 7" units.

The radar panel can be set up as a full screen view or combined with other panels.

Using the chart menu, the radar image can also be displayed as an overlay on a chart panel.

→ **Note:** Radar overlay requires data from a heading sensor or compass to ensure proper orientation with the chart.

The radar panel



- 1 Range
- 2 Orientation
- 3 Motion
- 4 Compass*
- 5 Heading line*
- 6 Rotary controls
- 7 Range rings*

- 8 Range markers*
- 9 Data bar

* Optional radar symbology.

Radar symbology can be turned ON/OFF collectively from the Radar menu, or individually as described in "*Radar settings panel*" on page 31.

Radar menu options

Use the Radar menu to set up EBL/VRM, guard zones, set the radar in standby and access the Adjust, Advanced and View options.

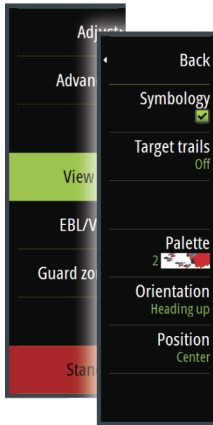
- EBL/VRM - The electronic bearing line (EBL) and variable range marker (VRM) allows quick measurements of range and bearing to vessels and landmasses within radar range.
- Guard zones - A guard zone is an area (either circular or a sector) that you can define on the radar image. When activated, an alarm alerts you when a radar target enters or exits the zone.
- Standby - The power to the radar scanner is on, but the radar is not transmitting.

Adjust the radar image

From the radar menu use the Adjust options to set the mode, gain, Sea clutter and Rain clutter. By adjusting these settings, you may be able to improve the radar image by adjusting the radar sensitivity, and by filtering out the random echoes from sea and weather conditions.

View and Advanced options

Use the menu View and Advanced options to refine the radar image to meet your needs.

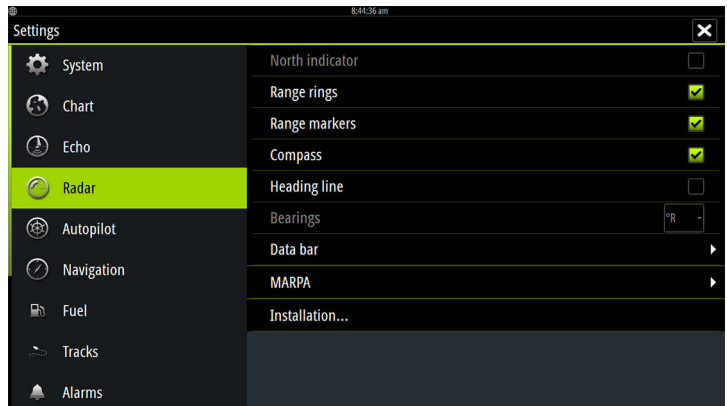
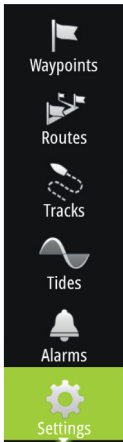


View menu



Advanced menu

Radar settings

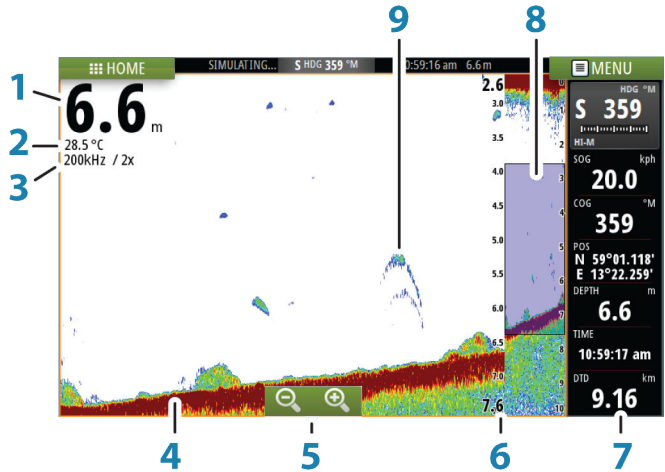


11

Echosounder

The Echosounder function provides a view of the water and bottom beneath your vessel, allowing you to detect fish and examine the structure of the sea floor.

The Echosounder image



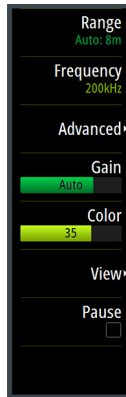
- 1 Depth
- 2 Temperature
- 3 Frequency and Zoom scale
- 4 Bottom
- 5 Zoom buttons
- 6 Depth range scale
- 7 Instrument panel
- 8 Zoom column
- 9 Fish arches

Viewing Echosounder history

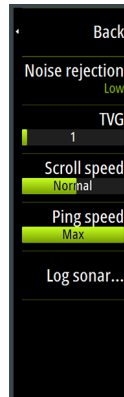
You can view echosounder history by panning the image. To resume normal scrolling, select the **Clear cursor** menu option.

Setting up the image

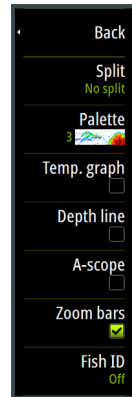
Use the Echosounder menu options to set up the image. When the cursor is active, some options on the Echosounder menu are replaced with cursor mode features. Select **Clear cursor** to return to the normal Echosounder menu.



Main menu



Advanced menu



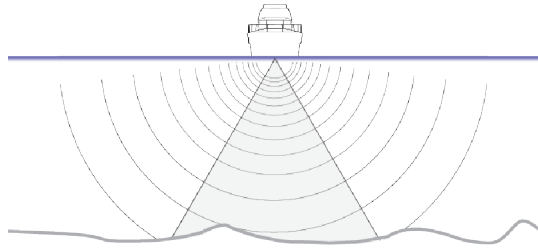
View menu

→ **Note:** The A-scope and Zoom bars options are not available on the 5" units.

12

StructureScan

StructureScan HD uses high frequencies to provide a high resolution, picture-like image of the seabed.

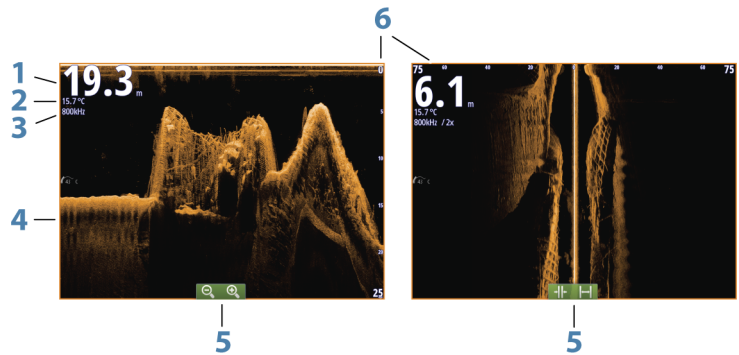


The StructureScan image

The view

The StructureScan panel can be set up as a DownScan image, or showing left/right side scanning.

The DownScan image can also be added as an overlay to the traditional Echosounder image.

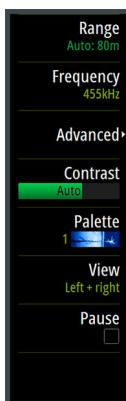


- 1 Depth
- 2 Temperature
- 3 Frequency
- 4 Bottom

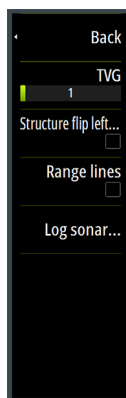
- 5 Zoom (downscan) / Range (sidescan) icons
- 6 Range scale

Setting up the image

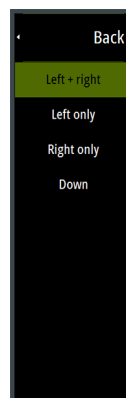
Use the StructureScan menu options to set up the image. When the cursor is active, some options on the StructureScan menu are replaced with cursor mode features. Select **Clear cursor** to return to the normal StructureScan menu.



Main menu



Advanced menu



View menu

13

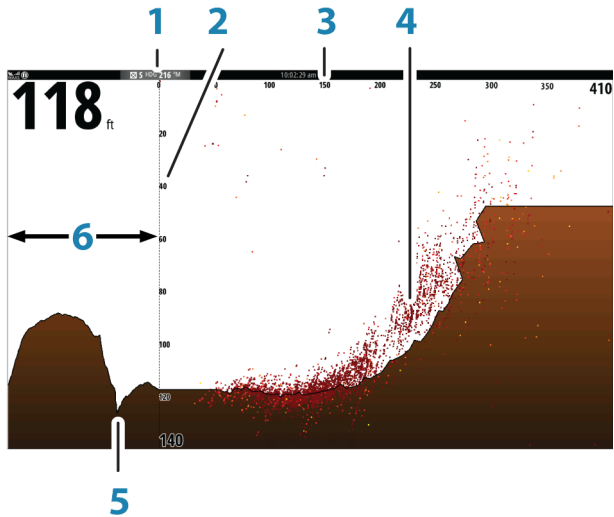
ForwardScan

ForwardScan sonar is a navigational aid that helps you monitor the underwater environment in front of your vessel while carrying out slow speed maneuvers.

To use the ForwardScan feature you must have a ForwardScan transducer mounted on your vessel. For installation instructions, refer to the ForwardScan transducer installation manual.

- **Note:** Do not rely on this equipment as your principle source of navigation or hazard detection.
- **Note:** Do not use this equipment to gauge depth or other conditions for swimming or diving.

The ForwardScan image

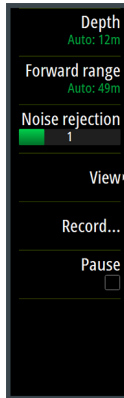


- 1 Transducer location shown as the origin on the page
- 2 Depth range scale and vessel position
- 3 Forward range scale
- 4 Point data

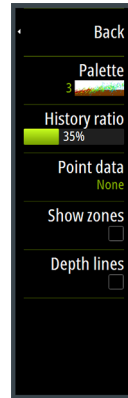
- 5 Bottom
- 6 Depth history

Setting up the image

Use the ForwardScan menu options to set up the image. When the cursor is active, some options on the ForwardScan menu are replaced with cursor mode features. Select **Clear cursor** to return to the normal ForwardScan menu.



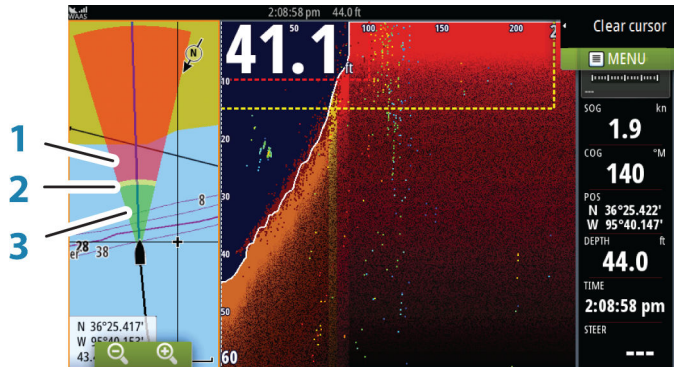
Main menu



View menu

Heading extension

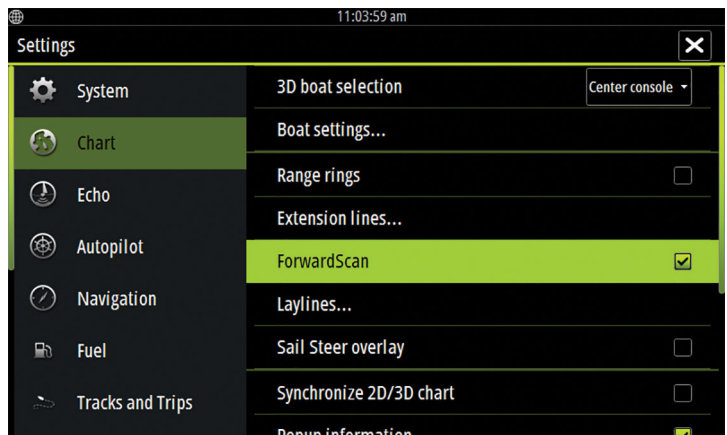
You can use the heading extension to monitor ForwardScan on the chart panel. Heading extension colors are based on the ForwardScan alarm values.



ForwardScan extension

- 1 Red - Critical
- 2 Yellow - Warning
- 3 Green - Safe

Select ForwardScan in the Chart Settings dialog to view the ForwardScan heading extension on the chart panel.



14

Instrument panels

The Instruments panels consist of multiple gauges - analog, digital and bar - that can be customized to display selected data. The Instruments panel displays data on dashboards, and you can define up to ten dashboards within the Instruments panel.

→ **Note:** To include fuel/engine information, engine and tank information has to be configured from the Settings panel.

Dashboards

A set of dashboard styles are predefined to display vessel, navigation, and angler information.

You switch between the panel's dashboards by selecting the left and right arrow buttons on the panel. You can also select the dashboard from the menu.



Vessel dashboard



Navigation dashboard



Angler dashboard

→ **Note:** Additional dashboards can be activated from the menu if other systems (e.g. CZone) are present on the network.

15

Wireless connection

GoFree wireless connectivity gives you the ability to:

- Use a wireless device to remotely view (smartphone and tablet) and control the system (tablet only).
- Access the GoFree Shop.
- Upload your Sonar logs to create custom maps at Insight Genesis.
- Download software updates
- Connect to third party applications



The unit includes Built-in wireless functionality for connecting to the internet and wireless devices such as smartphones and tablets.

→ **Note:** Maps, charts, software updates, and other data files can be large. Your internet service provider may charge you based on the amount of data you transfer. If you are unsure, contact your service provider to confirm rates and restrictions.

Connect and disconnect from a wireless hotspot



To connect to a wireless hotspot, select the Wireless option in the System Controls dialog and then select Not Connected. This opens the Wireless Devices dialog. Use this dialog to select the desired hotspot, enter the login information and then select Connect. Connecting to a wireless hotspot changes the wireless mode to **Client mode**. In this mode, you can access the GoFree Shop.

To disconnect from a wireless hotspot, select the Wireless option in the System Controls dialog, then select Connected *hotspot_name*, and then Disconnect. This changes the wireless mode to **Access point mode**. In this mode, you can connect a wireless device so that Apps such as GoFree Controller & Viewer can access the vessel's navigation information.

16

Audio

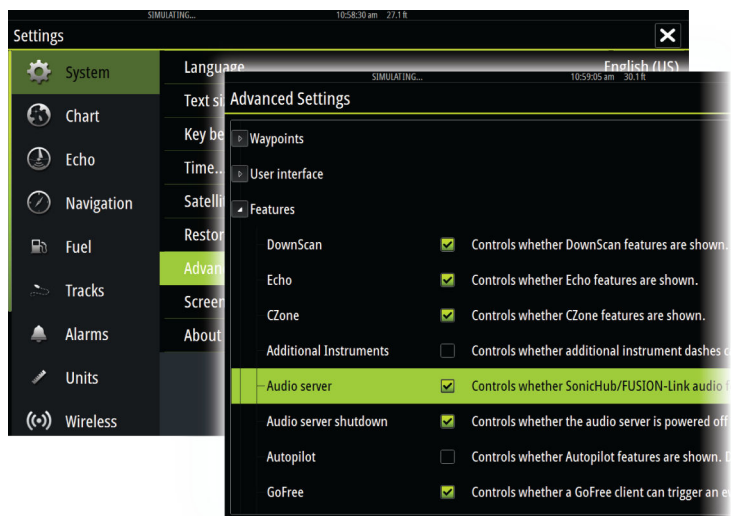
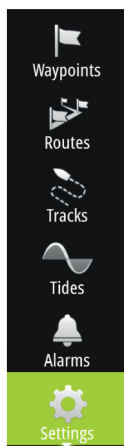
If a SonicHub server, a FUSION marine entertainment system, or NMEA 2000 audio system is connected to the NMEA 2000 network, you can use the Vulcan to control and customize the audio system on your vessel.

You can connect a SiriusXM radio/tuner to your FUSION server to receive SiriusXM radio on your system. The SiriusXM channels available vary depending on your selected subscription package. SiriusXM radio is only available in certain locations. For more information refer to www.siriusXM.com. SiriusXM audio is not available on 5" and 7" units.

Before you can start using your audio equipment, it must be installed according to the Vulcan Installation manual and to the documentation included with the audio device.

Enabling audio

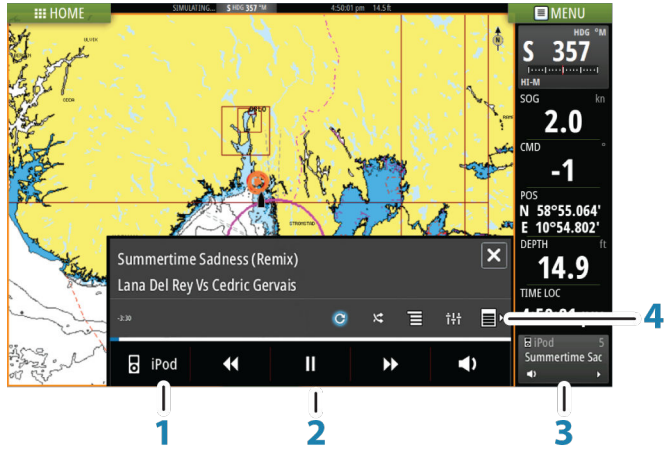
A compatible audio device connected to the NMEA 2000 network should automatically be identified by the system. If not, enable the feature from the **Advanced Settings** dialog.



The Audio panel

You activate the audio panel by activating the audio tile in the Instrument bar.

The control buttons, tools and options vary from one audio source to another as described later in this chapter.



- 1 Audio source
- 2 Audio control buttons
- 3 Audio tile
- 4 Audio tools

Operating the audio system

1. Select the Audio tile in the Instrument bar to activate the Audio overlay.
2. Select the options icon and then select the audio server.
3. Select the source icon and then select the audio source.
 - Number of sources depends on the active audio server.
4. Use the panel buttons to control your audio system.

For available options, refer to the documentation following your audio equipment.

17

Alarms

Alarm system

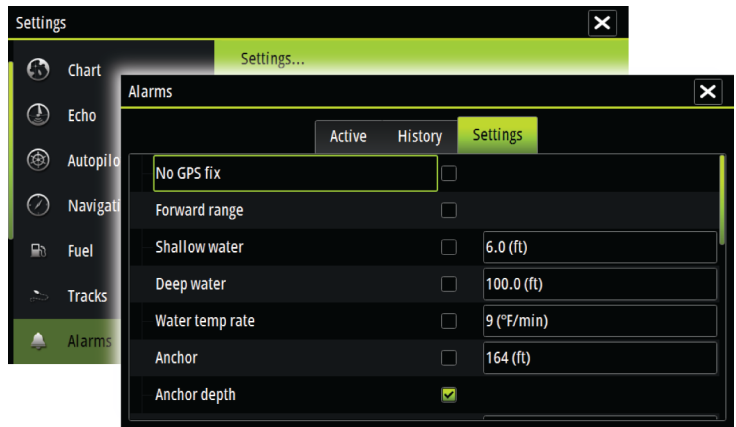
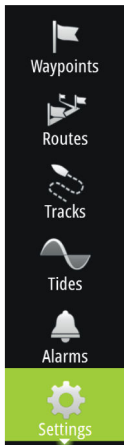
The system continuously checks for dangerous situations and system faults while the system is running. When an alarm situation occurs, an alarm message pops up on the screen.

If you have enabled the siren, the alarm message is followed by an audible alarm, and the switch for external alarm becomes active.

The alarm is recorded in the alarm listing so that you can see the details and take the appropriate corrective action.

Alarms dialog

All alarms are setup in the Alarms Settings dialog.



18

Tools

By default, the Tools panel includes icons used for accessing options and tools that are not specific to any panel.

When external equipment is integrated to the unit, new icons might be added to the Tools panel. These icons are used for accessing the external equipment's features.



Waypoints/routes/tracks

List of waypoints, routes, and tracks with details.

Select the waypoint, route, or track you wish to edit or delete.

Tides

Displays tide information for the tide station nearest to your vessel.

Select the arrow panel buttons to change the date, or select the date field to access the calendar function.

Available tide stations can be selected from the menu.

Alarms

Active alarms

List of active alarms.

Alarm history

List of all alarms with time stamp.

Alarm settings

List of all available alarm options in the system, with current settings.

Settings

Provides access to application and system settings.

Vessels

Status listing

List of all AIS and DSC vessels with available information.

Message listing

List of all messages received from other AIS vessels with time stamp.

Sun, Moon

Displays sunrise, sunset, moonrise and moonset for a position based on entered date and the position's latitude/longitude.

Trip calculator

Trip 1 / Trip 2

Displays voyage and engine information, with reset option for all data fields.

Today

Displays voyage and engine information for current date. All data fields are automatically reset when the date changes.

Files

File management system for Files, Waypoints, Routes, Trails, and Settings.

To view files, select a file in the Files panel and then the view file option in the Details dialog. You can copy screen captures and logs to a card in the card reader.

You can also export System Settings, Waypoints, Routes, and Trails to a memory card.

To view recorded sonar logs, use the view sonar log option in the Sonar settings dialog.

Find

Search function for chart items (waypoints, routes, tracks, etc.).

GoFree Shop

→ **Note:** The built-in wireless functionality must be connected to an external wireless hotspot in order to access the GoFree Shop. Refer to *"Connect and disconnect from a wireless hotspot"* on page 40.

Opens the GoFree Shop web site. At the GoFree Shop you can browse, purchase, and download compatible charts for your system. You can also upload your Echosounder logs to be shared on Social

Map charts. When you log on, the system automatically gives you a notification if a new software version is available for your system. If an update is available, you can download it to a card slot or defer the download until later.



B&G